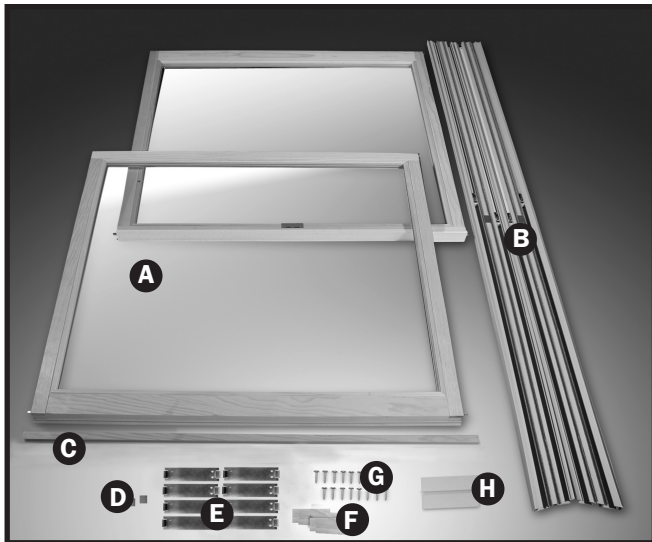




DH Replacement Kit Installation

LINCOLN WOOD PRODUCTS, INC.

TOOLS REQUIRED: Hammer, Phillips Head Screwdriver, Putty Knife, Pliers and Side Cutter Pliers



1. PARTS SUPPLIED:

- A. Sash
- B. Jambliners
- C. 1 - Parting Stop (wood)
- D. 4 - Sash Stops (white/beige)
- E. 8 - Jambliner Clips
- F. 8 - Wood Shims
- G. 32 - #7 x 7/8" Screws (for Jambliner Clips)
- H. 4 - Head Jamb Gaskets (white/beige)

2. Use a putty knife to pry off the inside wood stops. Be careful not to damage them because they can be reused. The bottom sash can now be removed. Disconnect and remove any balance mechanism.



Note: In some applications, removal of the stop may not be necessary. Depending on the age of the window, you may have to remove metal or vinyl jambliners.

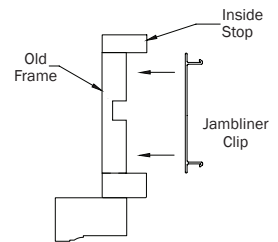
3. Slide top sash down and remove the head parting stop and the side parting stop with a pliers and discard them. The top sash can now be removed. Note: If parting stop being removed is vinyl, it may be possible to reuse.



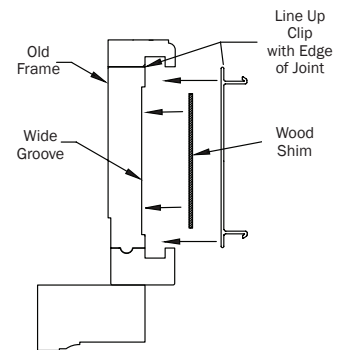
4. Verify the correct fit of the jambliners by placing them against the side jambs. If too tall, cut the bottom of the jambliners in 1/16" increments at a 14° angle. The supplied head jamb gaskets need to be applied to head jamb. Only two are needed - color match to jambliner. Peel off protective backing to expose adhesive and apply gasket to existing head jamb.



5. The metal clips are to be positioned against the jamb, approximately 4" down from the head jamb and 4" up from the sill. Attach these clips into place using the supplied #7 x 7/8" screws. Clips should be installed level and tight to inside stop.



Note: If side jamb has a wide groove which prevents the clip from being fastened flat against the jamb, place the supplied wood shim behind the clip before fastening to keep it level.

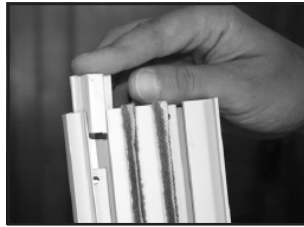


You can also utilize the shims if the jambs are slightly bowed or out of square.

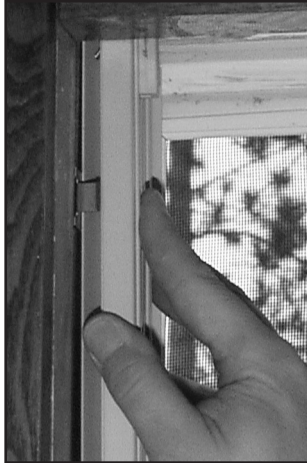


Note: Additional clips are supplied and may be used if required on taller units. Place the additional clips approximately at the midpoint of each sash location if necessary.

6. Install sash stops into each jambliner at the top of inside track as shown (right). Sash stops must be color matched to jambliner. **Note:** Sash stops must be applied or the sash or head jamb can be damaged.



7. Snap the balances onto the clips by pressing on the outside edges of jambliner. Check to ensure that the "hooks" on the clip interlock with the edge "hooks" on the jambliner.

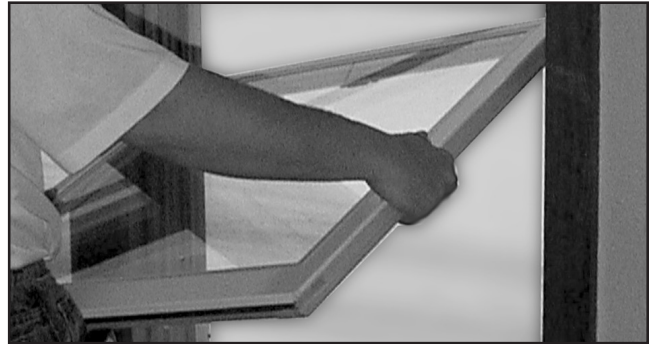


8. Depending on your window, you will now have 2 options for installing the head parting stop.

- A) If the original parting stop left a 1/2" groove in the head, install the supplied wood parting stop into the groove and fasten with 1-1/4" finish nails. Space nails 2" from each end and 8"-10" apart. **Note:** Parting stop may need to be cut to length to fit in-between jambliners.
- B.) If the original parting stop was vinyl and utilized a kerf in the head jamb to hold it in place, you may be able to reuse the original vinyl parting stop. If the vinyl parting stop can't be re-used, then the supplied wood parting stop can be fastened to the head jamb. Leave a 1/8" gap between the sash and wood parting stop and fasten it to the head jamb with 1-1/4" finish nails. Space nails 2" from each end and 8"-10" apart. **Note:** Parting stop may need to be cut to length to fit in-between jambliners.



9. When installing the top sash, engage pin in the outside track of the left balance (tilt pin must be above clutch mechanism) then engage the pin in the outside track of the right balance (above clutch mechanism).



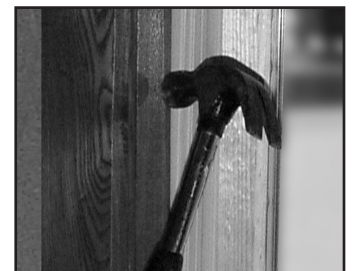
10. Now slide window to horizontal position.



11. Tilt the sash upward until the tilt latches engage in the jambliner. Allow sash to drop and engage clutch mechanism. Repeat procedures 7 through 9 to install lower sash (using inside track). Both sash should fit snug against the jambliner.



12. If applicable, replace the inside stops loosely against balance so that the balance can move freely. If the jambliner is not fully covered by the stops, additional stop material may need to be applied.



This completes the installation of your Lincoln Double Hung Replacement Kit.